

3. E&P data for the non-specialist

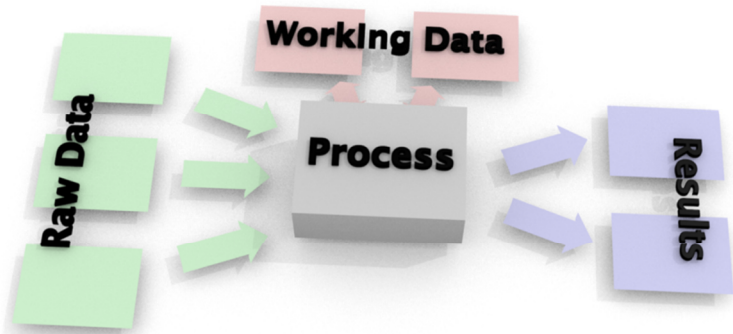


Figure 14: Overly simplified view of the specialist's activities



Figure 15: Typical oil company Value Chain

Assembly Line



Blackboard



Figure 16: Different metaphors for data handling in E&P companies

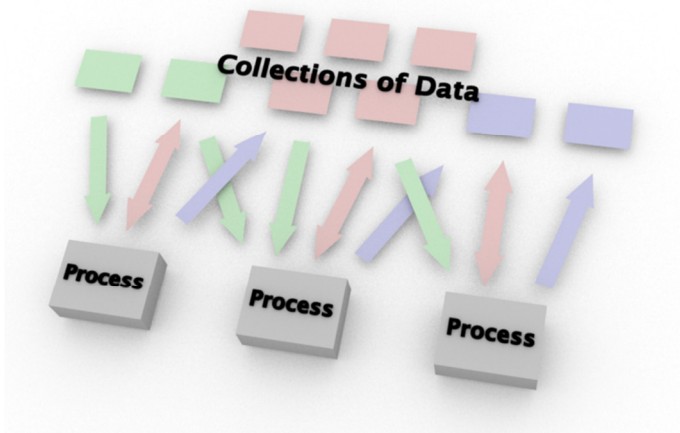


Figure 17: The activities each interact with data differently

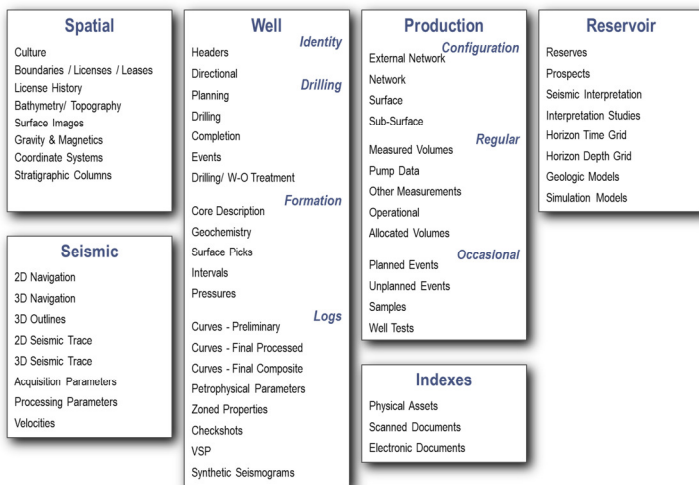


Figure 18: One possible categorization of E&P data

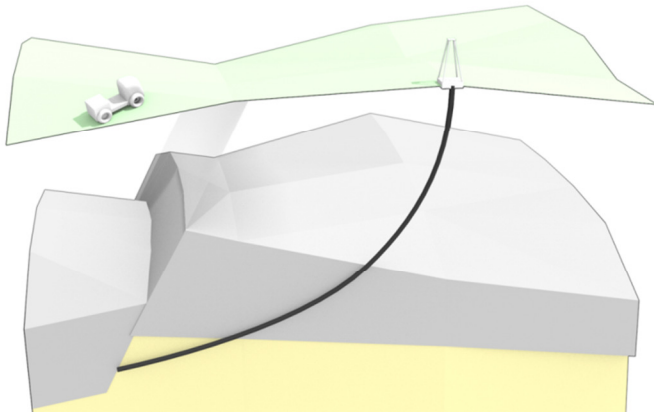


Figure 19: The subsurface

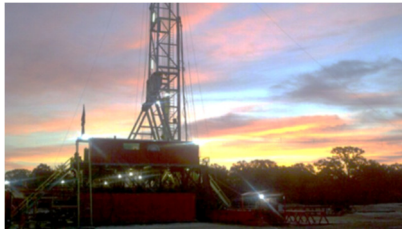


Figure 20: Drilling rig in South Texas

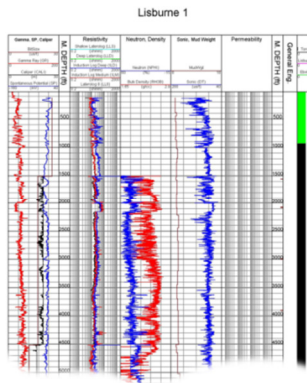


Figure 21: Measurements taken down the borehole

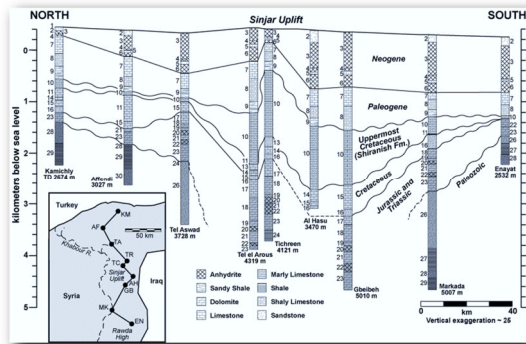


Figure 22: Well correlation panel

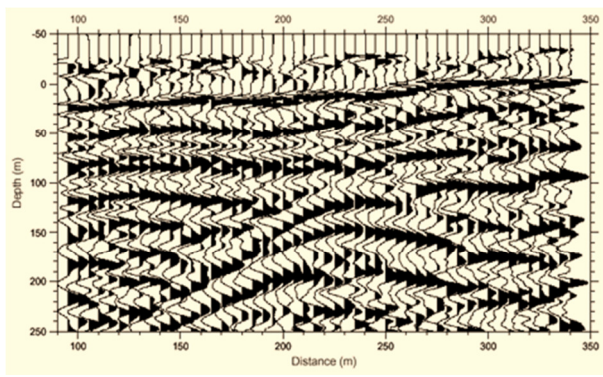


Figure 23: Seismic section

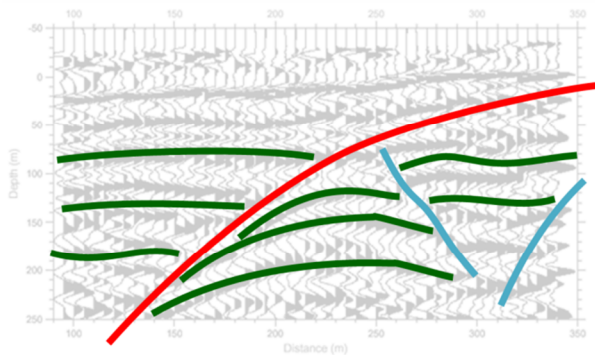


Figure 24: The seismic interpretation identifies surfaces and faults

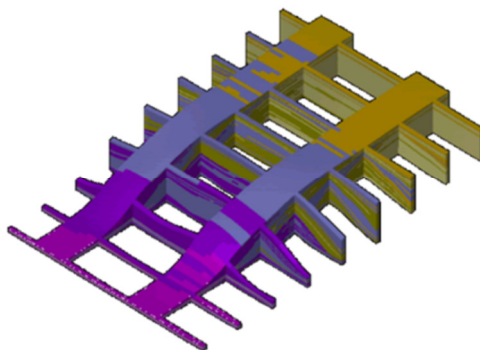


Figure 25: A static model of the subsurface features